



## **FIRST ENERGY METALS SUCCESSFULLY COMPLETES 5847 METRES PHASE 1 DRILL PROGRAM AT AUGUSTUS LITHIUM PROPERTY**

Vancouver, B.C. (September 08, 2021) – **First Energy Metals Ltd.** (CSE: FE) ("**First Energy**" or the "**Company**") is pleased to announce successful completion of Phase 1 Exploration work at its Augustus Lithium Property in Quebec, Canada. A total of 32 NQ size diamond drill holes were completed on the Property with a cumulative drilling of 5,847.15 metres (see Table 1 and Figures 1 & 2 for details). The exploration works also included prospecting, stripping, grab and channel sampling.

### **Highlights**

- A total of 32 drill holes were completed, out of which 27 holes intersected spodumene bearing lithium pegmatites and five holes had low grade lithium intercepts or did not hit any significant mineralization.
- Two drill holes LC21-30 and LC21-31 were drilled for metallurgical testwork purposes at the same locations as holes LC21-16 and LC21-20, respectively.
- The results of seven drill holes are completed and have been reported in the Company's news releases, ten holes intersected low grade or no lithium mineralization, two holes are kept for metallurgical testwork, and the results of 13 drill holes are pending.
- At the Augustus prospect spodumene bearing lithium mineralization has been delineated along a strike length of over 400 m in a NW-SE direction. The mineralization is still open along strike and dip.
- At the Beluga / Canadian Lithium prospect an approximately 50 metres wide high-grade lithium bearing spodumene pegmatite zone has been channel sampled on surface which need to be better understood through detailed mapping, channel sampling and diamond drilling. The drill holes beneath this pegmatite zone showed large pegmatite widths but smaller lithium bearing intersects.

Mr. Gurminder Sangha, CEO of First Energy Metals stated that, "We are very pleased with successful completion of the Phase 1 exploration work on the Augustus Property. The current work not only confirmed the historical lithium mineralization reported on the Property but also was able to define targets for further exploration work. The Company is looking forward to commencing a Phase 2 exploration work as soon as the results of the current exploration work are compiled and completed. I commend the hard work of the project team members who were able to successfully complete exploration work despite global impact of COVID 19 pandemic and restrictions on movement which made it difficult to organize logistics for the project."

The drill program was based on the historical exploration data and the Company's surface trenching and sampling program. Several historical drill hole collars were also located on the Property which helped in location and orientation of drill holes for the current program. The Drill program commenced on April 5<sup>th</sup> at the Property by Forage Hebert Inc. Drilling of Amos, Quebec who was contracted for this work. A B-20 drill rig was deployed which has a capacity to drill up to 1,000-meter-deep hole. A core shack is built at the village of St-Dominique du Rosaire located about 50km from the Property for drill core logging, sample preparation and storage. The drill core is logged and sampled at the core shack using a rock saw. For quality control and quality assurance (QA/QC), field duplicates, standards and blanks are being inserted at industry standard intervals.

All samples for this exploration work were bagged and tagged using best practices and were delivered to Activation Laboratories ("ACTLABS"), Ancaster, Ontario for sample preparation and analyses using laboratories code Ultratrace 7 and sodium peroxide fusion (Na<sub>2</sub>O<sub>2</sub>) as summarized below. ACTLABS is an independent commercial, accredited ISO Certified Laboratory.

Afzaal Pirzada, P.Geo., Geological Consultant of the Company, and a "Qualified Person" for the purposes of National Instrument 43-101 - *Standards of Disclosure for Mineral Projects*, has reviewed and approved the scientific and technical information contained in this news release.

### **About the Augustus Lithium Property**

The Company owns 100% interest in Augustus Lithium Property in Landrienne & Lacorne-Townships, Quebec, Canada. The Property consists of 337 mining claims covering a total area of over 15,000 hectares located approximately 40 kilometres northwest of the town of Val d'Or on map sheets 32C/05 and 32D08. The Property claims are spread in several claim blocks optioned in 2021 from different vendors. The Company has executed a Phase 1 work program which included trenching, channel sampling and diamond core drilling. Further work on the property will include diamond drilling to further delineate the lithium pegmatite intercepts in Phase 1 drill program, metallurgical testwork to produce battery grade lithium carbonate, and resource estimation. The Company has compiled historical drill hole data on the Property for 74 historical drill holes with a cumulative drilling of 12,123.14 m, out of which 6,024 m drilling was completed on the lithium prospects during 1950s. Several drill hole results indicated intersections over 1% lithium oxide. The Company has completed Phase 1 exploration work on the Property which included trenching, channel sampling, and diamond core drilling. A total of 32 NQ size core holes were drilled as part of the drill program with a cumulative drilling of 5847 metres."

### **About First Energy Metals Limited.**

First Energy Metals is a Canadian mineral exploration company with a primary focus of acquiring a multicommodity mineral property portfolio. Its goal is to identify, acquire and explore North American mineral prospects in the technology metals, precious metal, and base metal sector.

The company's strategy is to:

- Acquire and advance projects through prospecting and early-stage exploration;
- Source joint venture partners to finance future exploration and project development;
- Create shareholder value through exploration success.

First Energy will continue to add to its multicommodity portfolio through organic acquisitions of new projects and opportunities with the intention of adding value and projects over time.

ON BEHALF OF THE BOARD OF  
FIRST ENERGY METALS LTD.

**"Gurminder Sangha"**

Gurminder Sangha  
President & Chief Executive Officer

For further information, please contact the Company at: [gsangha@firstenergymetals.com](mailto:gsangha@firstenergymetals.com)

***Neither the Canadian Securities Exchange (CSE) nor its Regulation Services Provider accepts responsibility for the adequacy or accuracy of this news release and has neither approved nor disapproved the contents of this news release.***

**Forward-looking Information**

*Except for the statements of historical fact, this news release contains "forward-looking information" within the meaning of the applicable Canadian securities legislation that is based on expectations, estimates and projections as at the date of this news release. "Forward-looking information" in this news release includes information about the Company's intentions, plans and future actions described herein and the terms thereon.*

*The forward-looking information in this news release reflects the current expectations, assumptions and/or beliefs of the Company based on information currently available to the Company. In connection with the forward-looking information contained in this news release, the Company has made assumptions about the Company's ability to obtain required approvals. The Company has also assumed that no significant events occur outside of the Company's normal course of business. Although the Company believes that the assumptions inherent in the forward-looking information are reasonable, forward-looking information is not a guarantee of future performance and accordingly undue reliance should not be put on such information due to the inherent uncertainty therein.*

Table 1: Drill Hole Table

Drill Hole ID	NAD 1983 Zone 18N		Azimuth	Dip	Elevation	Total Depth	Results / Comments
	Easting	Northing	Degrees	Degrees	MASL*	metres	
<b><i>Augustus Prospect</i></b>							
LC21-12	287126	5367662	40.5	-44.5	361	275.00	Intersected 10 m at 1.11% Li <sub>2</sub> O at 110 m depth with other smaller / lower grade mineralized intercepts (see NR May 12, 2021)
LC21-13	287071	5367517	43.9	-43.8	352	324.00	No lithium mineralization
LC21-14	287263	5367851	230.8	-45.6	354	234.00	Results pending
LC21-15	287311	5367836	225	-44.1	351	216.00	Intersected a four-metre-wide zone with 1.27 per cent lithium oxide (Li <sub>2</sub> O) at 62.0 metres of drilled depth (see NR August 03, 2021).
LC21-16	287095	5367711	55	-44.7	362	288.00	Intersected 19 m at 1.17% Li <sub>2</sub> O at 126 m depth with other smaller / lower grade mineralized intercepts (see NR June 01, 2021).
LC21-17	287097	5367780	51.2	-44.5	371	315.00	Results pending
LC21-18	287097	5367780	56.9	-64	371	249.00	Results pending
LC21-19	287112	5367818	219.8	-54.2	369	165.00	Results pending
LC21-20	287036	5367817	47.8	-64.7	361	175.00	Results pending
LC21-21	286999	5367879	37	-64.5	362	138.00	Intersected a 10.5-metre-wide zone with 1.22 percent (%) lithium oxide (Li <sub>2</sub> O) at 69 metres (m) drilled depth (see NR July 20, 2021).
LC21-22	286934	5367935	53.2	-58.8	357	168.00	Intersected 10.5 m at 1.22% Li <sub>2</sub> O with other smaller intercepts (see NR July 20, 2021)
LC21-23	286862	5367973	42.8	-57.7	359	144.00	Results pending
LC21-24	287056	5367670	52.3	-58.6	362	360.00	Low grade pegmatites
LC21-25	287699	5367373	34.6	-54.3	362	171.00	No lithium mineralization
LC21-26	287749	5367454	231.2	-43.4	365	111.00	Low grade pegmatites
LC21-27	287126	5367662	43.7	-64.4	363	193.50	Low grade pegmatites
LC21-28	287165	5367631	45.5	-45.6	360	165.00	Low grade pegmatites
LC21-29	287181	5367944	217.6	-50.4	343	291.00	Results pending
LC21-30	287095	5367711	47.7	-45.2	365	192.00	Drilled for metallurgical testwork at LC21-16 location
LC21-31	287036	5367817	65.2	-47.1	363	152.00	Drilled for metallurgical testwork at LC21-20 location
Total drilling (m) at the Augustus Prospect						4,326.50	
<b><i>Beluga / Canadian Lithium Prospect</i></b>							

Drill Hole ID	NAD 1983 Zone 18N		Azimuth Degrees	Dip Degrees	Elevation MASL*	Total Depth metres	Results / Comments
	Easting	Northing					
LC21-01	18U 284864	5368330	38.7	-43.8	347	96.00	Results pending
LC21-02	284904	5368299	38.4	-44.3	350	99.00	Low grade (<0.01% to 0.25% Li2O) pegmatite from 8 to 53.10 m depth
LC21-03	284956	5368263	53.5	-49.4	350	147.00	Intersected 2 m at 1.35% Li2O at 48 m depth with other lower grade intercepts (see NR July 13, 2021)
LC21-04	284710	5368295	23.4	-45.5	334	44.00	Results pending
LC21-05	284773	5368325	39.6	-41.7	333	168.00	Intersected a 4-metre-wide zone with 1.47 per cent lithium oxide (Li2O) at 11.5-metre depth; A 3-metre-wide zone with 0.56 per cent Li2O at 32 m depth, including one-metre-wide zone with 1.14 per cent Li2O at 33 m depth (see August 17, 2021 news release).
LC21-06	284802	5368284	60.2	-45.4	336	81.00	Six metres pegmatite no lithium mineralization
LC21-07	284848	5368230	42.7	-50.3	340	93.00	Results pending
LC21-08	284826	5368322	69	-40.5	342	58.65	Results pending
LC21-09	284822	5368321	48.2	-44.2	342	147.00	Results pending
LC21-10	284724	5368331	53.6	-45.1	325	108.00	Low grade (<0.01% to 0.54% Li2O) pegmatite from 56 to 99.5 m depth
LC21-11	284995	5368237	57.6	-44.5	347	129.00	Low grade (<0.01% to 0.06% Li2O) pegmatite from 68 to 107 m depth
LC21-32	284931	5368437	216.9	-45.3	331	350.00	Results pending
Total drilling (m) at the Baluga / Canadian Lithium Prospect						1,520.65	
<b>Total Phase 1 Drilling</b>						<b>5,847.15</b>	

Notes: \*MASL – Metres above sea level

Figure 1: Drill Hole Location Map (Augustus Prospect)

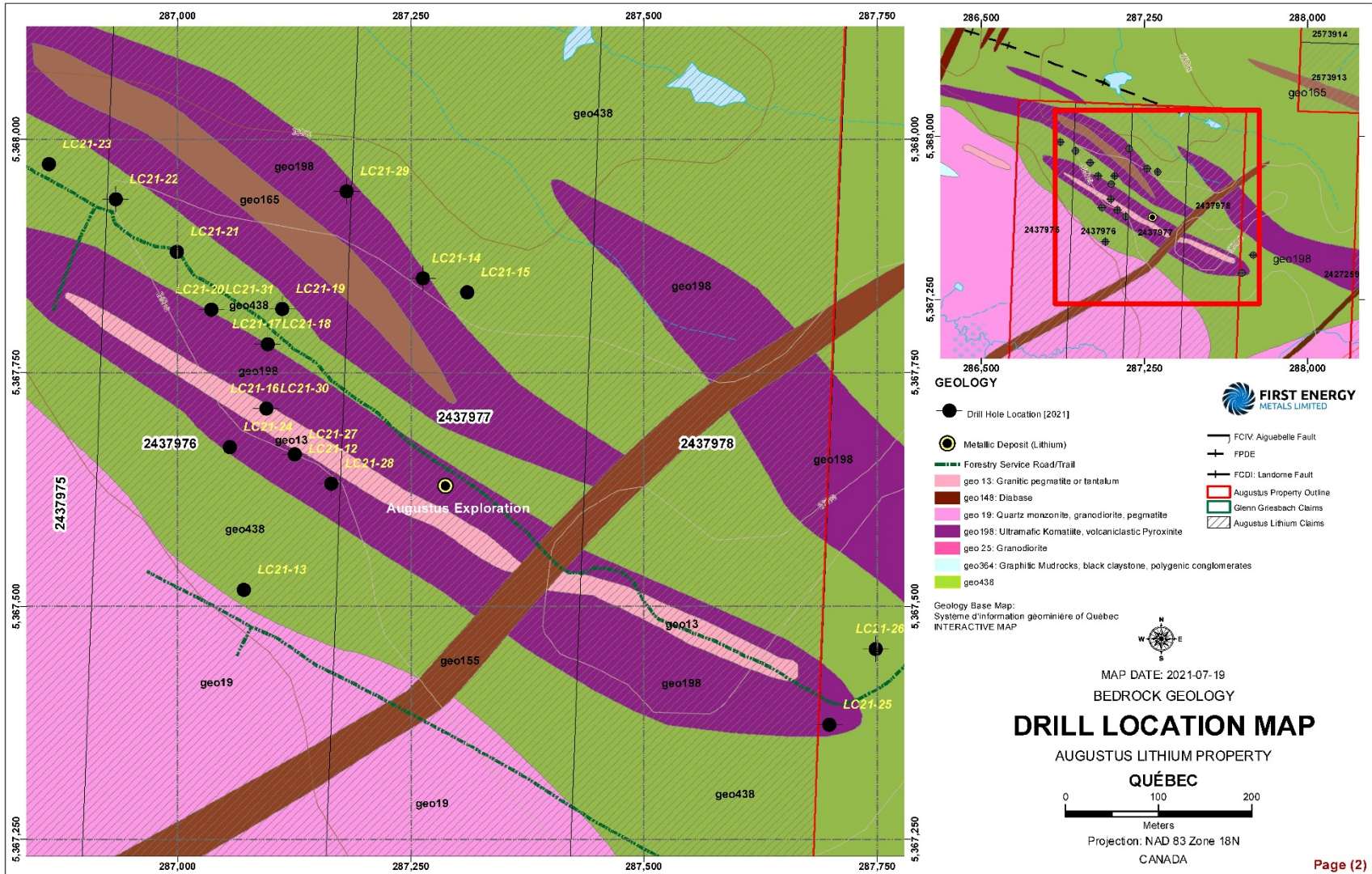


Figure 2: Drill Hole Location Map (Beluga / Canadian Lithium Prospect)

